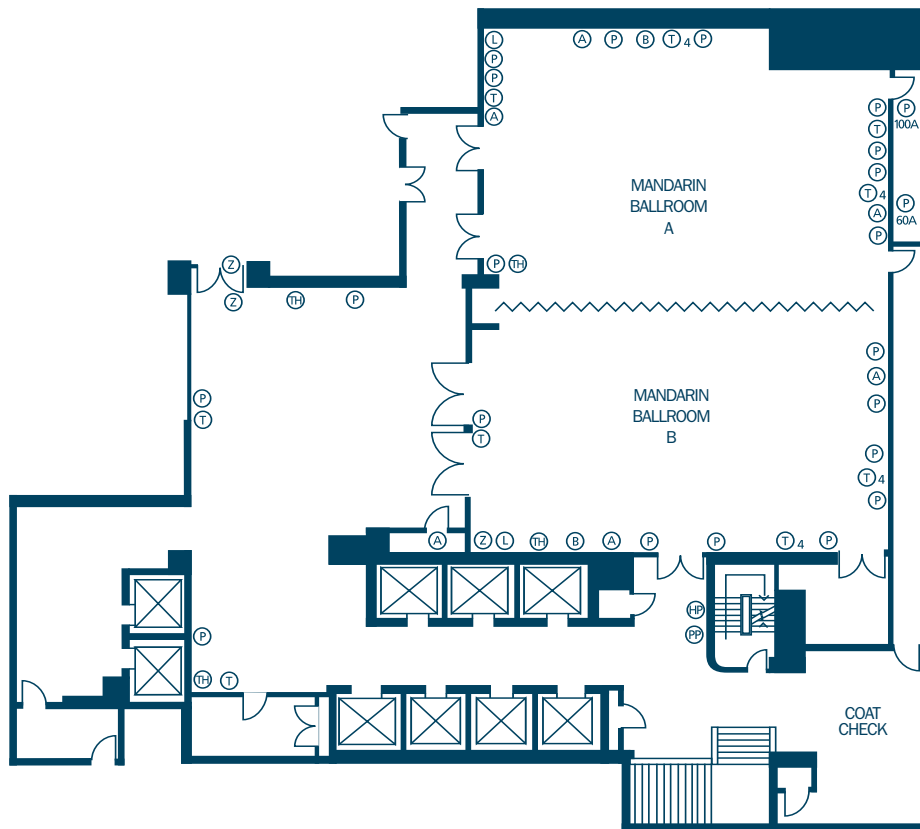


# METROPOLITAN TORONTO FLOOR PLANS AND SPECIFICATIONS

ROOM	SIZE	HT	SQ. FT	CL'RM	TH'RE	BQ'T	RECEP	U SHAPE	HOLLOW SQUARE	BOARD ROOM
<i>Ballroom-lower level</i>										
PRE-FUNCTION AREA	38' x 38'	12'	1,444	-	-	-	150	-	-	-
MANDARIN BALLROOM	52' x 67'	12'	3,346	160	360	280	360	190	90	-
MANDARIN A	52' x 35'	12'	1,568	74	150	130	180	45	56	34
MANDARIN B	52' x 35'	12'	1,778	80	170	140	200	48	60	34

*Capacities listed for all function rooms represent maximum attendance without special set-ups or equipment.*

## BALLROOM - LOWER LEVEL

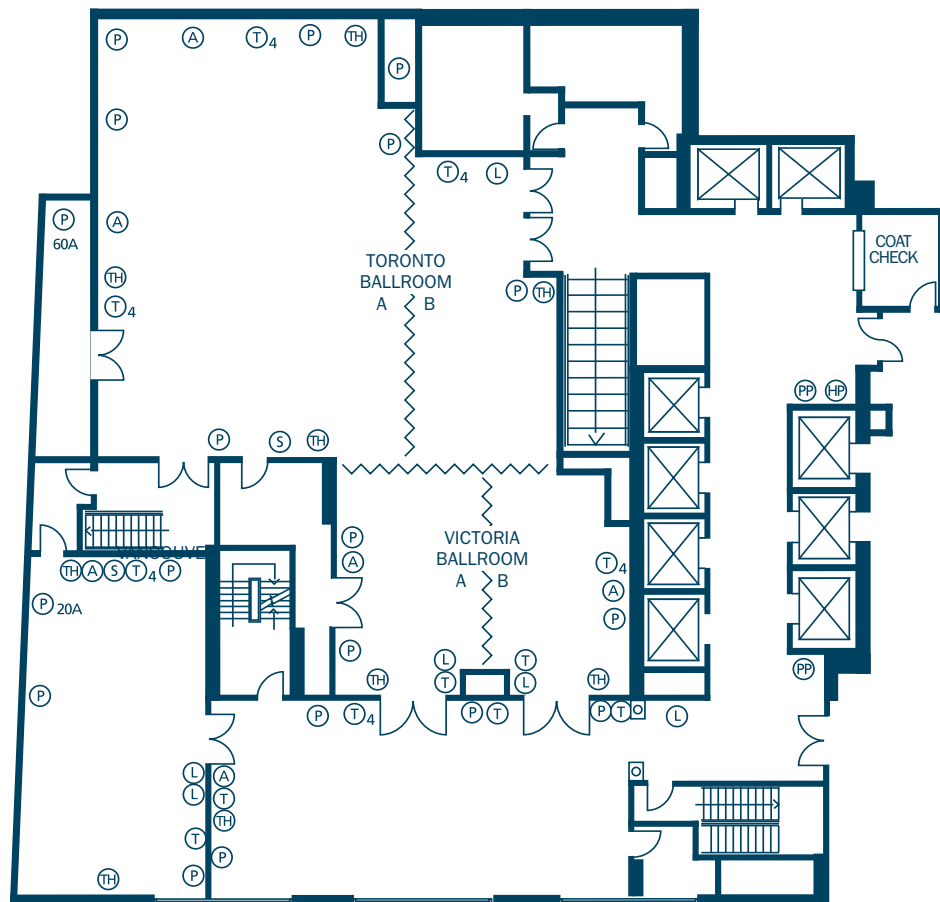


### LEGEND

(A)	Audio (Cannon Jack)	(P)	Power Outlet (110v)	(S)	Screen (Retractable)
(CT)	Cable	(P 240V)	Power Outlet (240v)	(T)	RJ-11 Telephone Jack
(B)	Broadband Internet	(P 100A)	100 Amp Power	(T 4)	RJ-45 Phone Jacks (4) (for DID and ISDN lines)
(HP)	House phone	(P 60A)	60 Amp Power	(TH)	Thermostat
(L)	Light Switch	(P 30A)	30 Amp Power	(W)	Whiteboard/Corkboard
		(P 20A)	20 Amp Power	(Z)	Music
		(PP)	Payphone		

ROOM	SIZE	HT	SQ. FT	CL'RM	TH'RE	BQ'T	RECEP	U SHAPE	HOLLOW SQUARE	BOARD ROOM
<i>Ballroom-second floor</i>										
TORONTO BALLROOM	53' x 50'	12'	2,204	74	180	160	200	48	60	40
TORONTO A	33' x 50'	12'	1,626	64	140	110	-	48	54	28
TORONTO B	20' x 32'	12'	578	20	40	30	40	24	28	22
TORONTO/VICTORIA	IRREG	12'	-	130	260	240	300	-	-	-
<i>Meeting Rooms-second floor</i>										
VICTORIA	30' x 36'	9'	1047	36	90	70	90	30	32	26
VICTORIA A	30' x 18'	9'	522	18	40	30	40	16	20	16
VICTORIA B	30' x 18'	9'	525	18	40	30	40	18	22	16
VANCOUVER	18' x 36'	9'	667	30	56	50	62	28	30	26

Capacities listed for all function rooms represent maximum attendance without special set-ups or equipment.

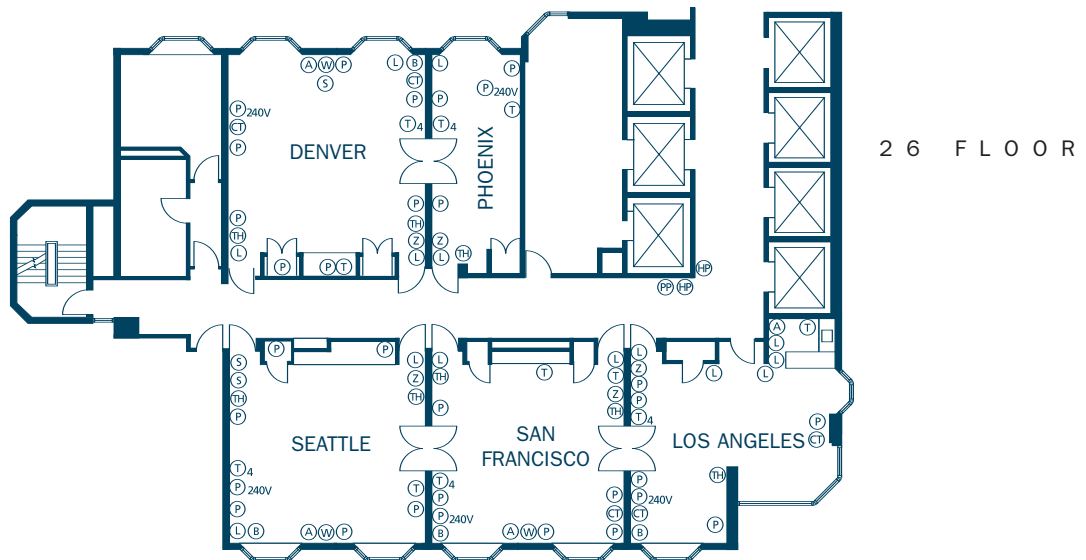
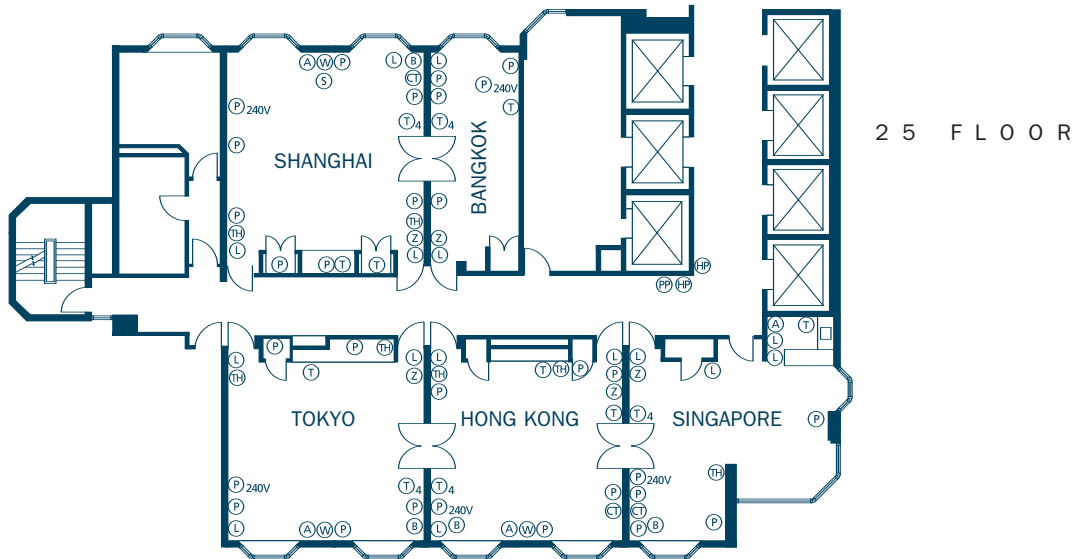


**LEGEND**

(A)	Audio (Cannon Jack)	(P)	Power Outlet (110v)	(S)	Screen (Retractable)
(CT)	Cable	(P 240V)	Power Outlet (240v)	(T)	RJ-11 Telephone Jack
(B)	Broadband Internet (10base-T Ethernet)	(P 100A)	100 Amp Power	(T4)	RJ-45 Phone Jacks (4) (for DID and ISDN lines)
(HP)	House phone	(P 60A)	60 Amp Power	(TH)	Thermostat
(L)	Light Switch	(P 30A)	30 Amp Power	(W)	Whiteboard/Corkboard
		(P 20A)	20 Amp Power	(Z)	Music
		(PP)	Payphone		

ROOM	SIZE	HT	SQ. FT	CL'RM	TH'RE	BQ'T	RECEP	U SHAPE	HOLLOW SQUARE	BOARD ROOM	
<i>Executive Meeting Rooms</i>											
<i>25th Floor 26th Floor</i>											
TOKYO	SEATTLE	24' x 24'	8'3"	528	20	40	40	45	20	24	18
HONG KONG	SAN FRANCISCO	22' x 24'	8'3"	528	20	40	40	45	20	24	18
SINGAPORE	LOS ANGELES	22' x 25'	7'11"	372	-	25	30	30	-	-	16
SHANGHAI	DENVER	23' x 23'	8'3"	529	20	40	40	45	20	24	18
BANGKOK	PHOENIX	26' x 11'	8'3"	286	-	-	10	-	-	-	10

Capacities listed for all function rooms represent maximum attendance without special set-ups or equipment.



**LEGEND**

- |      |  |          |                     |      |  |
|------|--|----------|---------------------|------|--|
| (A)  | Audio (Cannon Jack)                    | (P)      | Power Outlet (110v) | (S)  | Screen (Retractable)                           |
| (CT) | Cable                                  | (P 240V) | Power Outlet (240v) | (T)  | RJ-11 Telephone Jack                           |
| (B)  | Broadband Internet (10base-T Ethernet) | (P 100A) | 100 Amp Power       | (T4) | RJ-45 Phone Jacks (4) (for DID and ISDN lines) |
| (HP) | House phone                            | (P 60A)  | 60 Amp Power        | (TH) | Thermostat                                     |
| (L)  | Light Switch                           | (P 30A)  | 30 Amp Power        | (W)  | Whiteboard/Corkboard                           |
|      |  | (P 20A)  | 20 Amp Power        | (Z)  | Music  |
|      |  | (PP)     | Payphone            |      |  |